

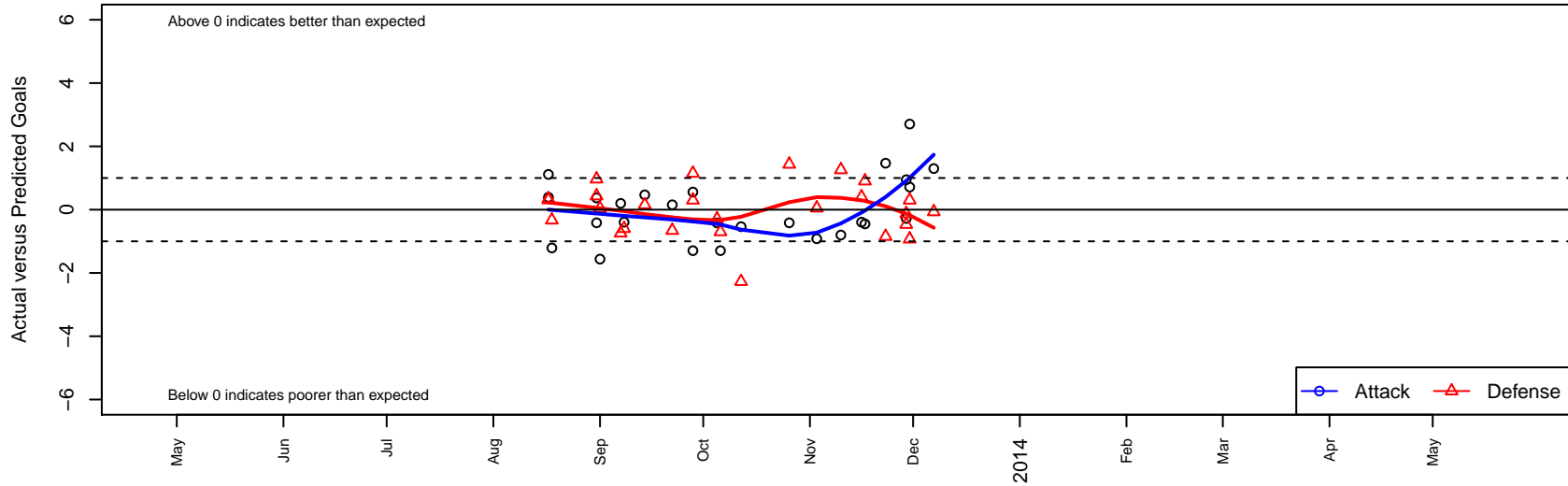
West Coast FC G02

, CAS
 G02 total strength=887
 attack=1.53 defense=1.2
 fall league = SCDL FI1 U11
 notes= Swanson 2013
 alt names used:
 WEST COAST FC G11 (CAS)
 West Coast FC G11 FC
 WEST COAST FC – SWANSON (CAS)

Venues played:
 West Coast Futbol Classic Flight 1 U11
 Blues Cup Lime U11
 SCDL FI1 U11
 SoCal DL Fall Showcase Flight 1 U11
 Surf Thanksgiving Gold U11



West Coast FC G02
 Dots are actual minus expected GF (blue circles) and GA (red triangles).
 Blue line is smoothed change in attack strength. Red is smoothed change in defense strength.



| | date | home | | away | | venue | pred.home | pred.away |
|------|-------------|---------------------------------|---|--|---|--|------------------|------------------|
| 3020 | 2013-12-07 | Newport Mesa Waves G02 | 1 | West Coast FC G02 | 2 | SCDL FI1 U11 | 0.93 | 0.70 |
| 2979 | 2013-11-30 | West Coast FC G02 | 4 | So Cal Athletic Holley G02 | 1 | Surf Thanksgiving Gold U11 | 1.30 | 1.30 |
| 2991 | 2013-11-30 | Arsenal FC Brown G02 | 4 | West Coast FC G02 | 1 | Surf Thanksgiving Gold U11 | 3.07 | 0.29 |
| 2938 | 2013-11-29 | Exiles SC Black G02 | 2 | West Coast FC G02 | 2 | Surf Thanksgiving Gold U11 | 1.87 | 1.05 |
| 2939 | 2013-11-29 | West Coast FC G02 | 1 | Del Mar Carmel Valley Sharks White G02 | 1 | Surf Thanksgiving Gold U11 | 1.28 | 0.53 |
| 2908 | 2013-11-23 | West Coast FC G02 | 3 | Pateadores Irvine White G02 | 2 | SCDL FI1 U11 | 1.53 | 1.15 |
| 2861 | 2013-11-17 | Laguna Hills Eclipse White G02 | 1 | West Coast FC G02 | 0 | SCDL FI1 U11 | 1.90 | 0.45 |
| 2844 | 2013-11-16 | Slammers FC A G02 | 2 | West Coast FC G02 | 0 | SCDL FI1 U11 | 2.40 | 0.40 |
| 2765 | 2013-11-10 | Laguna Hills Eclipse West G02 | 0 | West Coast FC G02 | 0 | SCDL FI1 U11 | 1.26 | 0.80 |
| 2645 | 2013-11-03 | West Coast FC G02 | 0 | Laguna Hills Eclipse Blue G02 | 1 | SCDL FI1 U11 | 0.92 | 1.05 |
| 2462 | 2013-10-26 | West Coast FC G02 | 0 | San Diego Surf SC Academy I G02 | 1 | SCDL FI1 U11 | 0.42 | 2.43 |
| 2161 | 2013-10-12 | West Coast FC G02 | 0 | San Diego SC Academy Navy G02 | 5 | SCDL FI1 U11 | 0.54 | 2.73 |
| 2045 | 2013-10-06 | West Coast FC G02 | 0 | So Cal Athletic Holley G02 | 2 | SCDL FI1 U11 | 1.30 | 1.30 |
| 1968 | 2013-10-05 | So Cal Blues Baker G02 | 6 | West Coast FC G02 | 0 | SCDL FI1 U11 | 5.71 | 0.42 |
| 1791 | 2013-09-28 | West Coast FC G02 | 0 | So Cal Athletic Holley G02 | 1 | SoCal DL Fall Showcase Flight 1 U11 | 1.30 | 1.30 |
| 1803 | 2013-09-28 | Strikers FC FI1 G02 | 1 | West Coast FC G02 | 1 | SoCal DL Fall Showcase Flight 1 U11 | 2.15 | 0.44 |
| 1690 | 2013-09-22 | Slammers FC Maroon G02 | 1 | West Coast FC G02 | 1 | SCDL FI1 U11 | 0.34 | 0.85 |
| 1483 | 2013-09-14 | Pateadores Irvine White G02 | 1 | West Coast FC G02 | 2 | SCDL FI1 U11 | 1.15 | 1.53 |
| 1364 | 2013-09-08 | West Coast FC G02 | 0 | Slammers FC A G02 | 3 | SCDL FI1 U11 | 0.40 | 2.40 |
| 1312 | 2013-09-07 | West Coast FC G02 | 1 | Laguna Hills Eclipse West G02 | 2 | SCDL FI1 U11 | 0.80 | 1.26 |
| 1180 | 2013-09-01 | Gilbert Arsenal 03 Premier G02 | 1 | West Coast FC G02 | 0 | Blues Cup Lime U11 | 1.04 | 1.56 |
| 1147 | 2013-08-31 | San Diego Surf SC Academy I G02 | 2 | West Coast FC G02 | 0 | Blues Cup Lime U11 | 2.43 | 0.42 |
| 1150 | 2013-08-31 | Eagles SC G02 | 2 | West Coast FC G02 | 1 | Blues Cup Lime U11 | 2.97 | 0.63 |
| 1027 | 2013-08-18 | West Coast FC G02 | 0 | Las Vegas Premier SC 03 White G02 | 1 | West Coast Futbol Classic Flight 1 U11 | 1.21 | 0.67 |
| 982 | 2013-08-17 | West Coast FC G02 | 2 | FC Dallas 03 Premier G02 | 1 | West Coast Futbol Classic Flight 1 U11 | 1.61 | 1.34 |
| 985 | 2013-08-17 | West Coast FC G02 | 3 | Encinitas Express Soccer White G02 | 0 | West Coast Futbol Classic Flight 1 U11 | 1.89 | 0.31 |